

# ALVARADO

## EDC Waist High Turnstile



### Technical Specifications

<b>Dimensions</b>	<u>Unit Height:</u>	40.5" (1029 mm)
	<u>Unit Width:</u>	25" (635 mm)
	<u>Unit Depth:</u>	27" (686 mm)

<b>Materials</b>	<u>Cabinet:</u>	Formed and welded 14 gauge cold rolled steel. All exterior welds are ground smooth and polished and there are no exterior fasteners visible on the cabinet. The inside of the cabinet contains two interior mounting tubes that allow the turnstile to be installed without the use of visible anchors, bolts or fasteners.
	<u>Lid:</u>	Formed and welded 14 gauge #304 stainless steel polished to a #4 satin finish. The lid is mounted to the cabinet with two hinge assemblies. When the lid is in the closed position it is secured with two cam locks. The lock assemblies are keyed alike. There are no exterior fasteners.
	<u>Head:</u>	Solid piece of aluminum, machined to an attractive conical shape and drilled to accept the three turnstile arms. The arms are press fit into the head and welded from the back. There are no exterior fasteners.
	<u>Arms:</u>	1.5" OD x 16 gauge stainless steel tubing. The arms are sealed at one end by a stainless steel cap welded and ground smooth. When at rest, the arms create a 90-degree passageway so that the arms do not impair the patron passageway. The arms are polished to a #4 satin finish. The arms extend 15.5" from the inside edge of the cabinet.

All tubing and sheet metal materials meet ASTM Standard A513.

<b>Function</b>	The EDC is a manual, waist high three arm turnstile designed to provide quick and effective patron throughput and counting. An electric locking control version of the EDC, the EDCX, is also available for controlled access applications.
-----------------	---

<b>Available Configurations</b>	The following configuration of the EDC is available:
---------------------------------	--

<b>EDC-3</b>	Using key lock control, the EDC can be configured to provide free passage in both directions; free passage in one direction and restricted passage (locked) in the opposite direction; or restricted passage (locked) in both directions.
--------------	---

<b>Interior Components</b>	<u>Ratchet Assembly:</u>	Precision investment cast stainless steel and machined, hardened steel parts.
	<u>Roller Bearing Assembly:</u>	Six precision roller bearings that ride on a precision investment cast stainless steel cam to provide precise and smooth one way or bi-directional rotation.
	<u>Hydraulic Dampening Assembly:</u>	Provides a smooth braking effect during the rotation of the turnstile to eliminate "rumpslap" and over rotation of the turnstile arm. It also automatically self centers the arms to the "home" position. The hydraulic dampening tension is adjustable.
	<u>Mechanical Key Override:</u>	Key override allows the operating technician to mechanically lock or unlock one or both directions of the EDC turnstile. Separate key overrides are provided for each direction of travel and are located near the arms on the cabinet fascia. The key override locks are keyed alike.

<b>Available Finishes</b>	<b>Powder Coated</b>	Available in a wide variety of colors. Sub-assemblies are sand blasted to prepare for the powder coating finish. The powder is electrostatically applied, then baked to assure proper curing and adhesion. Normally the stainless steel lid, the aluminum head, and the stainless steel arms are not powder coated.
	<b>Stainless Steel</b>	The cabinet is fabricated from #304 stainless steel and polished to a #4 satin finish.
<b>Shipping Details</b>	EDC turnstiles are fully assembled in a solid, fully enclosed, wooden crate. Each EDC unit includes mounting hardware (anchors, bolts, washers, etc.) to install the turnstile into a concrete base. Alvarado ships products throughout the world.	
<b>Installation Details</b>	All EDC units must be installed on a firm foundation. The recommended platform is 4" deep, level concrete. No embedded fasteners are needed for installation. Installation should be performed by a skilled installer following the manufacturer's directions and instructions (supplied with the turnstile).	
<b>Approximate Weight</b>	Standard model: Approximately 175 lb. (79 Kg) per cabinet Extended and Bullnose models: Approximately 205 lb. (93 Kg) per cabinet. Extended Bullnose model: Approximately 235 lb. (107 Kg) per cabinet.	

## Options

### Counter

A lithium battery powered LCD counter is installed in the turnstile. Each rotation of the turnstile arm generates a count. One counter is required per direction of travel. The counter battery has a life expectancy of six years.

### Computerized Counting

Each turnstile rotation outputs a count to GateWatch, Alvarado's Windows based software program that monitors and records real time patron counts. Counts can be transmitted from the turnstile in several ways, including over a standard, in facility, Ethernet network or using wireless RF devices.

### Portable Base

The turnstile is affixed to diamond plate base with a guide rail.

### Electric Lock Control Upgrade

The EDC is convertible to electric lock control units with the addition of electrical components. The required brackets and insertion holes are included in the EDC unit to allow for easy field retro fitting.

### Alternative Cabinet Styles

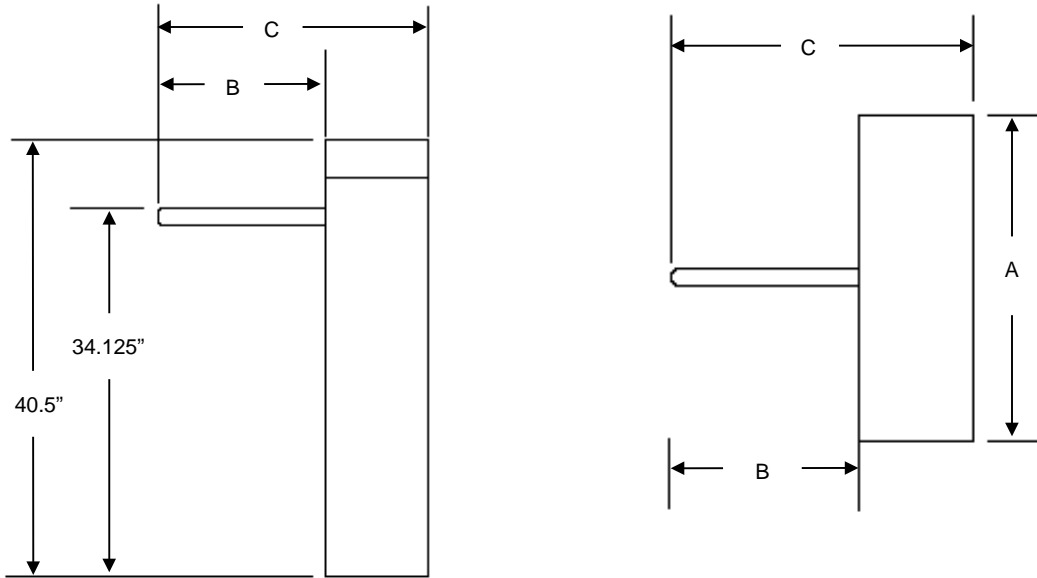
The EDC is also available in the following cabinet styles:

- **Extended:** Extended cabinets are 34" long.
- **Bullnose:** Rounded ends are added to both ends of the turnstile cabinet. Bullnose cabinets are 36.5" long.
- **Extended Bullnose:** Extended bullnose cabinets are 43.5" long.

### Extended Arms

Longer turnstile arms can be provided on Extended or Extended Bullnose style EDC cabinets. When used with the extended cabinets, arm lengths may be up to 20.5" long.

# EDC Site Preparation (Standard Model shown)

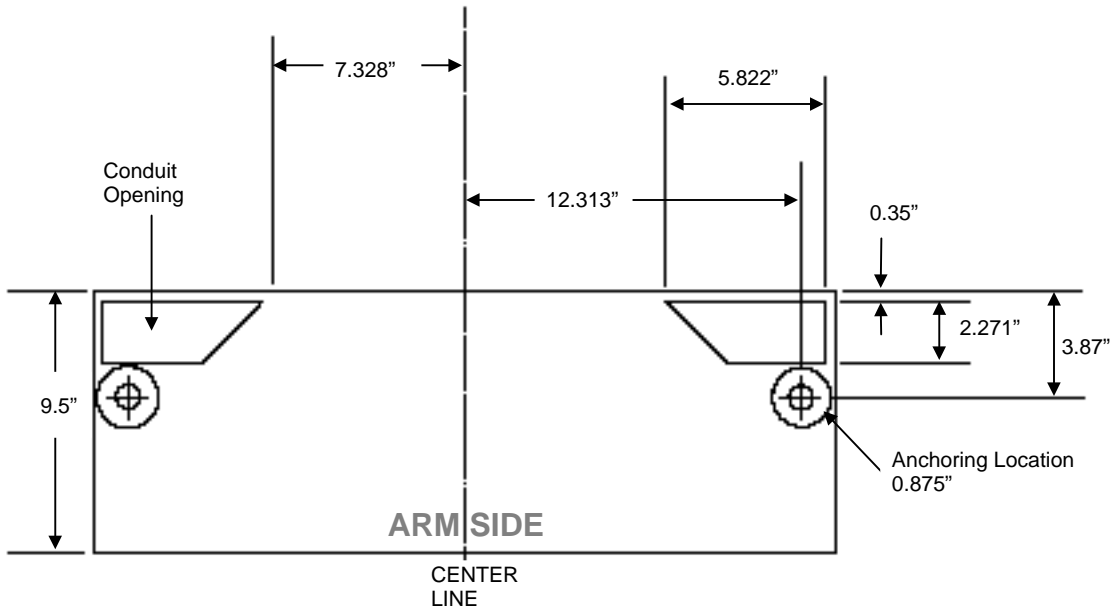


## DIMENSIONS:

Model	A	B	C
EDC	27.0"	15.5"	25.0"
EDC Extended	34.0"	20.5"	30.0"
EDC Bullnose	36.5"	15.5"	25.0"
EDC Ext. Bullnose	43.5"	20.5"	30.0"

Note: Allow a 2" clearance gap between the end of the turnstile arm and the next unit or outside barrier.

## Footprint Drawing



Note: Anchoring Footprint is the same regardless of the cabinet type.

**Slab Requirements**

- Minimum thickness: 4" level solid concrete

**Warranty**

Alvarado Manufacturing Co., Inc. warrants the EDC, from defects in material or workmanship, for the period of ONE YEAR from date of shipment. Complete details of the warranty are available from Alvarado by request.

**Technical Services**

Technical information is available from Alvarado Manufacturing Co., Inc., and its representatives, distributors, and dealers.

# ALVARADO

Alvarado Manufacturing Company, Inc.  
12660 Colony Street  
Chino, CA 91710

Telephone (909) 591-8431  
Toll Free (800) 423-4143  
Fax (909) 628-1403

**[www.alvaradomfg.com](http://www.alvaradomfg.com)**